

*Designers & Manufacturers of Drilling & Tapping Solutions*

- Tap up to 17 holes at once
- Minimum spindle centers = 1/2" collet or 3/8" bored type.
- 6" or 8" round work area
- Converts from 1:1 to 1:2 gear ratio in the field.
- Ball bearing construction, hardened gears and solid hex drivers give dependable, heavy-duty service.
- Aluminum head for minimum weight. Sturdy base with dual guide rods and balance springs.

**STANDARD EQUIPMENT**

Styles 37-MJ, 37-MK, 37-MP and 37-MQ furnished with base assembly (shown below), wrenches and unbored TEMPLATE.

Spindles with U-joints and collets not included as standard equipment.

**SPECIFICATIONS**

STYLE	MAX. REC. SPEED	SHIPPING WEIGHT
37-MJ	2200 RPM	38 lbs.
37-MK	2200 RPM	42 lbs.
37-MP	2200 RPM	41 lbs.
37-MQ	2200 RPM	45 lbs.

**CAPACITY**—Maximum 3/8" tap per driver depending on spindle assembly selected.

**Order Numbers for Style 37-MJ, 37-MK, 37-MP and 37-MQ Attachments**

STYLE	WORK AREA	NO. OF DRIVERS	GEAR RATIO	WITH BASE ASSEMBLY ORDER NO.	LESS BASE ASSEMBLY ORDER NO.
37-MJ	6" dia.	7	1:1	33005	33009
37-MJ	6" dia.	6	1:2	33006	33010
37-MK	8" dia.	9	1:1	34005	34009
37-MK	8" dia.	8	1:2	34006	34010
37-MP	8" dia.	10	1:1	39005	39009
37-MQ	8" dia.	17	1:1	40005	40009



**Base Assembly** – MJ, MK, MP and MQ include base, bosses, guide rods, balance springs and adapter bar. Series order Number 33510 Weight – 23 lbs.



**TEM-PLATE**

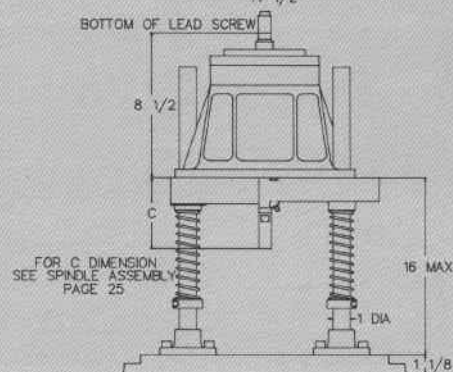
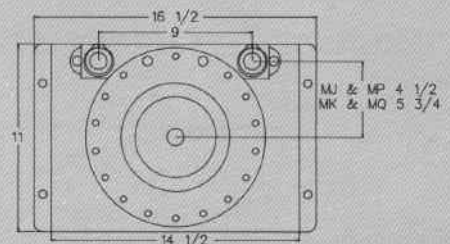
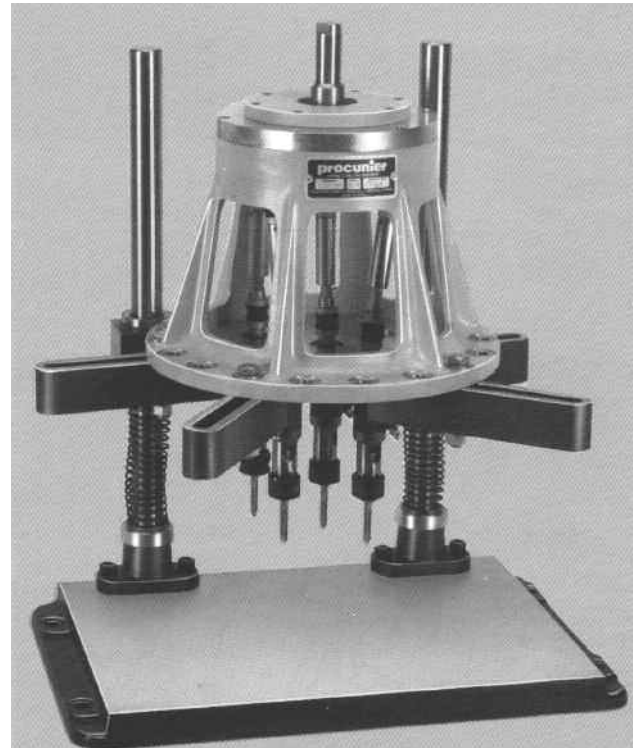
The exclusive Proconier TEM-PLATE assures positive location of spindle assemblies allowing ease of repeat set-ups. Plates are easily interchanged to different hole patterns.

\*PROCUNIER will custom position and bore these TEM-PLATES.



**Special Bar Assembly**

Cartridge type spindles do not require a TEM-PLATE. They are designed to use 1 1/2" – thick bars bored to hold cartridge type spindles. These bars are special and individually quoted. Series Order Number 33499.



Fits Style	Order Number
37-MJ & 37-MP	33261*
37-MK & 37-MQ	34261*