

Company:

From:

Fax:

Ph:

Attn to:

Ref. order/quote no.

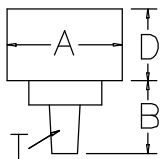
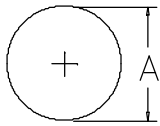
Drill Press Make & Model:

Procnier model to attach:

Select proper configuration - Fill in dimensions.

STANDARD CHUCK TAPER

CONFIGURATION 1



QUILL DIA A \_\_\_\_\_

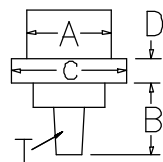
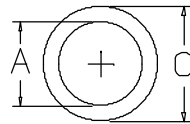
SPINDLE PROJ B \_\_\_\_\_

CLAMP AREA D \_\_\_\_\_

JACOBS TAPER T \_\_\_\_\_

FLANGED CHUCK TAPER

CONFIGURATION 2



QUILL DIA A \_\_\_\_\_

SPINDLE PROJ B \_\_\_\_\_

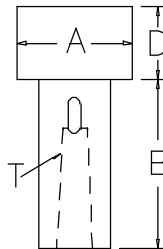
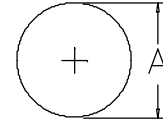
FLANGE DIA C \_\_\_\_\_

CLAMP AREA D \_\_\_\_\_

JACOBS TAPER T \_\_\_\_\_

STANDARD MORSE TAPER

CONFIGURATION 3



Note: may be short if taper is internal

QUILL DIA A \_\_\_\_\_

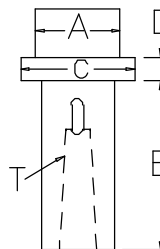
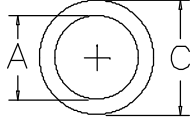
SPINDLE PROJ B \_\_\_\_\_

CLAMP AREA D \_\_\_\_\_

MORSE TAPER T \_\_\_\_\_

FLANGED MORSE TAPER

CONFIGURATION 4



Note: may be short if taper is internal

QUILL DIA A \_\_\_\_\_

SPINDLE PROJ B \_\_\_\_\_

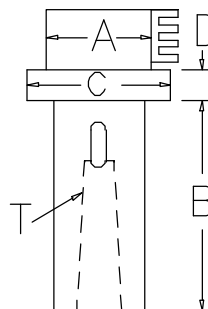
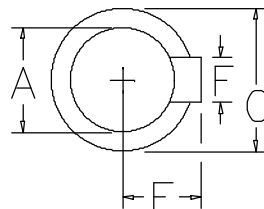
FLANGE DIA C \_\_\_\_\_

CLAMP AREA D \_\_\_\_\_

MORSE TAPER T \_\_\_\_\_

CONFIGURATION 5

Gear Rack



Note: may be short if taper is internal

QUILL A \_\_\_\_\_

SPINDLE PROJ B \_\_\_\_\_

FLANGE DIA C \_\_\_\_\_

CLAMP AREA D \_\_\_\_\_

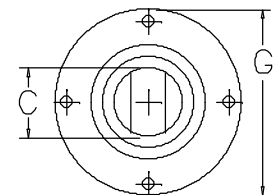
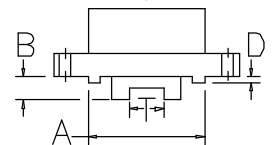
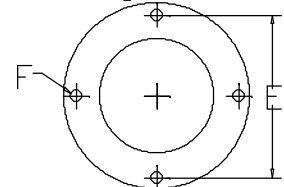
RACK PROJ E \_\_\_\_\_

RACK WIDTH F \_\_\_\_\_

MORSE TAPER T \_\_\_\_\_

CONFIGURATION 6

Flange Mount



PILOT DIA A \_\_\_\_\_

SPINDLE PROJ B \_\_\_\_\_

SPINDLE DIA C \_\_\_\_\_

PILOT DEPTH D \_\_\_\_\_

BOLT CIRCLE DIA E \_\_\_\_\_

HOLE DIA F \_\_\_\_\_

NUMBER OF HOLES F \_\_\_\_\_

FLANGE DIA G \_\_\_\_\_

TANG DEPTH S \_\_\_\_\_

TANG WIDTH T \_\_\_\_\_

DIMENSIONS A & C REFER TO NON-ROTATING QUILL